



EPITECH & ESME SUDRIA

SUMMER SCHOOL 2021

MAKE YOUR OWN ROBOT



ESME SUDRIA IN A NUTSHELL



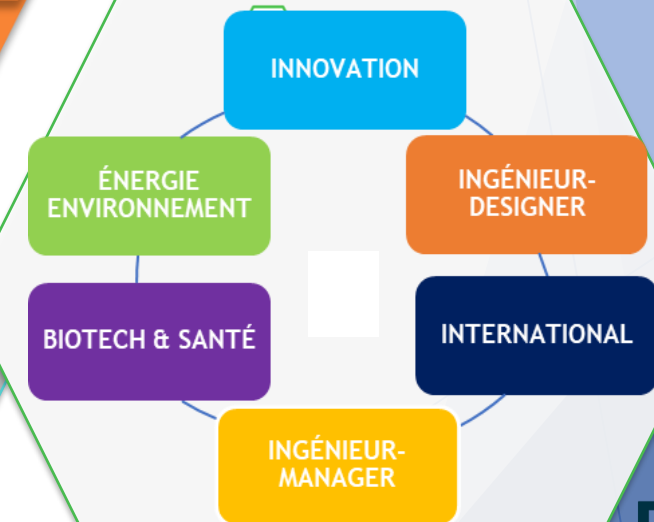
5 campus
2 500 étudiants
et apprentis

40 student
unions across
the 5 campus

A multi-
disciplinary
engineering
education

16 majors
Including
3 majors fully
taught in
English

15 500
alumni



STUDIES AT ESME

- ▶ **European calendar (Sept-Dec // February-June)**
- ▶ **A practice-oriented curriculum**
 - Labs, projects, internships
- ▶ **Unlimited access to a network of pedagogical E-Smart labs**
 - (3D printers, laser cutters, digital milling machines, etc.)



INTERNATIONAL PROGRAMS

► Full Engineering degree (5 years, equivalence Master's degree) taught entirely in English

► 3 Master's degree of Engineering (2 years) fully taught in English

2 majors:

- IoT & smart cities
- Cybersecurity
- Electrical Vehicules

Discover Epitech

- Established in 1999
- One of the largest IT schools in France
- Over 5500 students
- 15 campuses in France and 5 abroad
- Innovative learning approach

So [...] what is Epitech?

Say goodbye
to Your
traditional
classroom



And hello to a whole
new way of learning

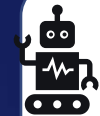
Problem solving skills
learn by doing



Collaboration



Innovation



Hands-On

The Epitech Method



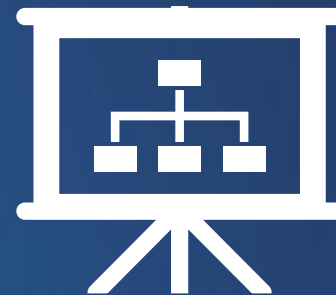
Kick-off
Meeting



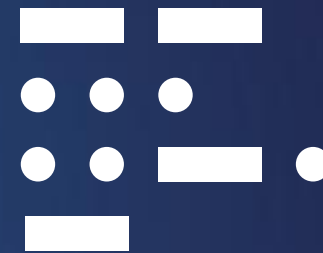
Bootstrap



Follow-up



Delivery



Project and
code review

Open mindset with experts

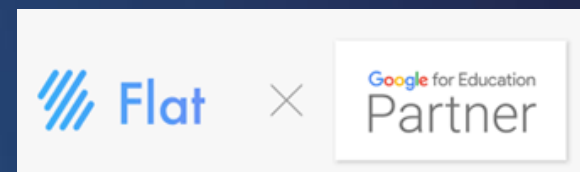
Final project pitch



Discover Epitech Projects



PrestaShop



EPITECH & ESME Summer School 2021

Immerse yourself in the exciting world of Robots !



3 weeks



July 5 to 23



6 ECTS



Online or
on-site

Experiment & learning outcomes

Technical skills



Soft skills



Ability to use a set of digital tools and methods to build a product

Ability to solve problems independently and as a team

Ability to coordinate multiple, interdisciplinary tasks in order to achieve a goal

Ability to apply newly learned information to define, design and lead a project

Ability to drive a project and to meet deadlines

ELECTRONICS, ROBOTICS, CREATIVE CODING, DESIGN, CAD, DIGITAL ARTS

DESIGN THINKING, CO-WORKING, TROUBLESHOOTING, PROJECT MANAGEMENT

Week 1

Introduction to Electronics

Week 2

Assembly & Simulation of the robot > 3D
Modelisation (CAD)

Week 3

Bring your robot alive, be creative!





PROGRAM FEES

Online: 900€ all public

including courses, robotic material, online activities

On-site: 2,400€ all-inclusive
2,200€ partner rate
1,600€ exchange students

All-inclusive:

- Courses
- Robotics material kit
- Housing
- Breakfast and lunch on weekdays
- French Language courses
- All cultural activities & trips
- The farewell party
- A 3-week Paris transport pass and a lot more!

APPLICATION INFORMATION

Admission requirements

Basic knowledge in Science and Technology Basic knowledge in programming

English proficiency equivalent to B2 level

Application documents

Online application

Copy of Passport

Transcripts of the last two years of studies

Certificate of English proficiency

Short statement explaining your interest for this program



APPLICATION INFORMATION

Application deadline: May 31st

Apply now by:

- filling in the [online form](#)
- sending the documents to the international offices:

international@esme.fr

International-relations@epitech.eu

If covid situation allows...



*Stay at Cité-U, the International University Campus
in Paris!*

Historic buildings and gardens

20 minutes from campus via Tram

Breakfast included

Cultural activities in Paris





THANK YOU !

Contacts

international@esme.fr

international-relations@epitech.eu